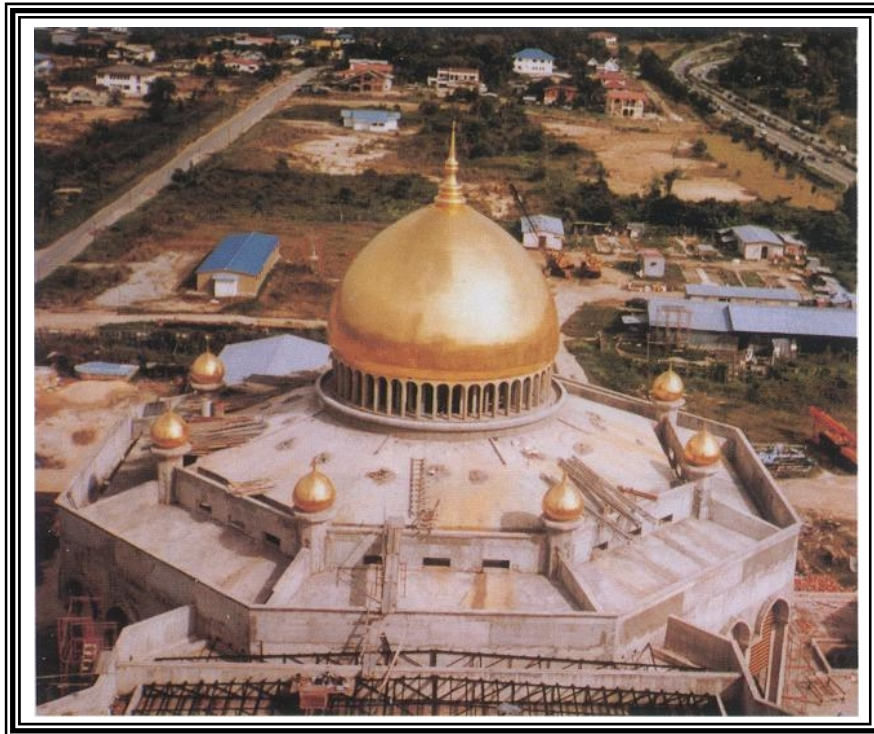


LIFETIME WATERPROOFING AND PROTECTION FOR STRUCTURAL CONCRETE

RADCON[®]
FORMULA#7



MONUMENTS & FACADES
SITE REFERENCES

RADCRETE



RADCRETE PACIFIC PTY LTD • NEWSLETTER NO 11 • OCT-NOV 1991

EDITORIAL

This, our No. 11 Newsletter, represents a significant milestone.

It is now four and a half years since Radcrete Pacific commenced marketing Radcon #7 in Australia and South East Asia.

From the start, the reputation of Radcon #7 has been built on its ability to waterproof building roof tops - arguably the most critical area in waterproofing.

At the same time, Radcon #7 has proved the viable solution to a broad range of waterproofing treatments - some of which appear in this Newsletter.

Radcon #7 may be regarded as the Rolls Royce of waterproofing materials. The product's benefits are here for all to see - waterproofing concrete for the life of the structure at a cost-effective level in a wide variety of applications.

Radcrete Pacific Pty Ltd

59 Elizabeth Bay Road
Elizabeth Bay NSW Australia 2011

TELEPHONE 61-2-357 7855

FACSIMILE 61-2-358 5106



RADCON #7 STRIKES GOLD IN BRUNEI

One of the most interesting jobs ever to receive our Radcon #7 treatment is the private mosque for the Sultan of Brunei.

Malaysia's leading waterproofing company, Green East Enterprise, recently completed application to this site.

Some 1,600 square metres of the dome areas were Radcon #7 waterproofed prior to being covered with 24 carat gold tiles.

Operating from Kuala Lumpur, Green East Enterprise undertakes waterproofing projects throughout Malaya, Sarawak, Sabah and, of course, Brunei.

EXCLUSIVE GLOBAL DISTRIBUTOR FOR

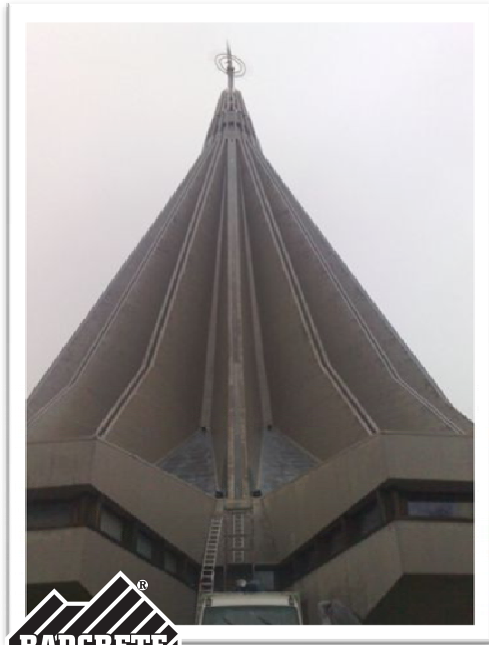
RADCON™
FORMULA #7

SEALING CONCRETE FOR LIFE

SITES OF INTEREST 2010

Radcrete Pacific presents: **Commercial Buildings**

[Click here
for our website](#)



SITE DETAILS:

COUNTRY	- Italy
SITE	- Our Lady Sanctuary
CLIENT	- Syracuse Municipality
CONTRACTOR	- FIP Industrial S.p.A.
ARCHITECT	- Salvatore Calafiore
APPLICATOR	- Celegato Company
TREATED AREA	- Facade
SIZE	- 33,000 sq metres

FIGURE 1-2.

Our Lady Sanctuary and Radcon #7 spray application on the facade of the building .

Lifetime RADCON #7 facelift for a landmark façade in Sicily.

RADCON Formula #7 has been called to the rescue of a facade with concrete that is more than 50 years old at the Our Lady Sanctuary in Syracuse, Italy.

All the concrete surfaces first had to be water blasted and treated with acetic acid.

The facade was then treated with RADCON # 7, followed by a polyurethane resin coating and took one year to complete.



EXCLUSIVE GLOBAL DISTRIBUTOR FOR **RADCON FORMULA #7** WATERPROOFING CONCRETE FOR LIFE

RECENT SITES OF INTEREST 2005

Radcrete Pacific presents: Commercial Buildings

[Click here for our website](#)



Radcon Formula # 7 for the new Iberê Camargo Foundation Headquarters in Brazil.

Netherland Engenharia, Radcrete's exclusive representative in Brazil, commenced waterproofing and protection of the country's new architectural landmark and international site reference, the Iberê Camargo Museum in Porto Alegre.

The project was coordinated by Jose Luis Canal and designed by Architect Alvaro Siza and Engineer Jorge de Silva of GOP Portugal. It also won Arq. Siza the Golden Lion award at the 2002 Venice Architecture Biennial.

Radcrete global network played a key role in the specification of Radcon for this site; it was Nuno Guimaraes, Radcrete's exclusive representative in Portugal who was responsible.

The building's pure white facades were designed as a 45mpa concrete but reached as high as 60mpa. Being located on the Guaiba River it required protection against chloride ingress & chemicals due to the heavy traffic in the area.

Radcon will also protect the construction from dust and resist staining from graffiti, which significantly reduces the maintenance and cleaning costs.

The Museum will exhibit more than 4000 works by Iberê Camargo alone, as well as featuring numerous Brazilian and international artists.

SITE DETAILS:

COUNTRY	- Brazil - Porto Alegre
PROJECT NAME	- Iberê Camargo Museum
CLIENT	- Iberê Camargo Foundation & Construcoes e Comercio Camargo Correa
APPLICATOR	- Netherland Engenharia ltd
SIZE	- 6,337.10 sq mtr



FIGURE 1 & 2
Application works

A plan for a broad program of activities in the field of modern and contemporary art is also under way.

The facilities will include 9 exhibition rooms, an etching studio, a multi-use studio, an auditorium, a research and information centre, an atrium, a bookshop, a café and underground parking.

We will be bringing you more details on this interesting project as the application works progress.



FIGURE 4 & 5
The Netherland Engenharia Applying Team

RADCRETE



RADCRETE PACIFIC PTY LTD • NEWSLETTER NO. 20 • JUL - AUG 1995

A.C.N. 003 228 975

EDITORIAL

As with any new innovation, there is a certain time frame of performance and persistence that are required before achieving acceptance within an industry. After eight years of waterproofing concrete in the Australian market, Radcon #7 has received its ABSAC Technical Appraisal.



This Appraisal is considered mandatory prior to the specification or approval by councils and the public sector of the construction industry. More details inside.

A controversial topic around the world is the use of cement replacement materials. Drawing from experience and knowledge gained from working in 25 countries we look into the changing behaviour of concrete and open the discussion 'Fly Ash & Slag: The Durability Debate'.

South America is often overlooked when it comes to Australian exports. With Radcon #7's first application coming up shortly, we look forward to keeping you up to date with further developments.

Radcrete Pacific Pty Ltd

Level 3, 45a Bay Street
Double Bay NSW Australia 2028

TELEPHONE +61-2-362 3511

FACSIMILE +61-2-362 3244



MONUMENT YOGYA KEMBALI, INDONESIA

This interesting architectural structure, Monument Yogya Kembali, recently received a treatment of Radcon #7 to approximately 5,000 square metres of concrete in place of a failing membrane.

PT Argacipta Cemerlang, our exclusive representatives for Indonesia, performed the rectification work on this site. The Department Pekerjaan Umum who were the consultants and technical advisers for the site, specified Radcon #7 to resolve the water penetration problems. The Monument is located in Yogyakarta, Central Java.

Radcon #7 was applied to the structural concrete prior to placement of the tiled finish. After the final watering, the Monument was re-tiled to its original form as depicted in the photograph above.

Aside from the waterproofing, the fact that Radcon #7 increases the bond strength between cementitious materials was an added advantage to reduce the chance of any delamination. Now a seal has been achieved, the Monument's concrete will remain watertight for the life of the structure.

Now with 3 years of Radcon #7 applications completed, PT Argacipta Cemerlang are building a faultless track record across Indonesia.

INSIDE: TAIWAN FREEWAY, ABSAC APPRAISAL, FLYASH ...

EXCLUSIVE GLOBAL DISTRIBUTOR FOR **RADCON[®]** FORMULA #7 WATERPROOFING CONCRETE FOR LIFE

THE GLEN SHOPPING CENTRE, MELBOURNE

Architect: Hames Sharley Architects
 Engineer: Connell Wagner Engineers
 Construction Managers: Bovis McLachlan
 Main Contractor: Baulderstone Hornibrook
 Approved Applicator: Higgins Coating
 Area treated: Suspended car park deck
 Size: 7,000 sqm
 Completed: May 1996

The Glen Shopping Centre is located in the Melbourne suburb of Glen Waverly. The construction work seen here is part of a major upgrade and extension to the existing shopping centre.



FIGURE 5 - THE GLEN

Radcon Formula #7 was applied to two main areas: the exposed car park area on the upper level seen in Figures 6 & 7, and the exposed loading dock and car park on the lower levels. While both slabs were stressed there was some degree of cracking which showed leakage.

Radcon #7 was chosen as the material to waterproof this structure due to the products simplicity, speed of application and the proven reliability when exposed to high traffic and thermal stress.

The application of Radcon #7 can be seen here in Figure 7 being applied to the top deck of the car park. Radcon #7 absorbs into the concrete over a 3 day watering procedure. The product reacts with the free Calcium ions that are liberated during the primary hydration of the concrete, forming a non-water soluble calcium silicate hydrate gel complex. This dense gel material reduces the permeability of the concrete matrix, and seals the shrinkage cracks, even when exposed to high thermal stresses.

The application of Radcon #7 can be seen here in Figure 7 being applied to the top deck of the car park. Radcon #7 absorbs into the concrete over a 3 day watering procedure. The product reacts with the free Calcium ions that are liberated during the primary hydration of the concrete, forming a non-water soluble calcium silicate hydrate gel complex. This dense gel material reduces the permeability of the concrete matrix, and seals the shrinkage cracks, even when exposed to high thermal stresses.

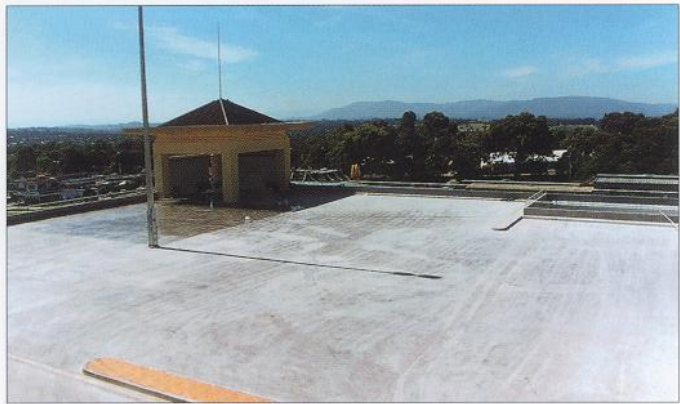


FIGURE 6 - SECTION OF CAR PARK

The motorised spray unit will enable application speeds up to 800 square metres per hour. The fast application rate of Radcon #7 proved to be beneficial to Baulderstone Hornibrook who were nearing completion of the project at the time of waterproofing.



FIGURE 7 - RADCON #7 APPLICATION

YOSENJI TEMPLE, JAPAN

This interesting Temple located in Tokyo was designed to have an exposed concrete finish as seen in Figure 8. For the waterproofing of this site, Radcon #7 was ideal due to its ability to waterproof both, the matrix of the concrete, and seal existing cracks up to 2.00mm.

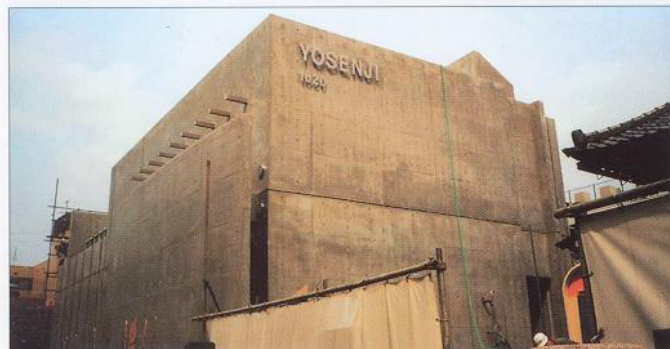


FIGURE 8 - YOSENJI TEMPLE, TOKYO

Regarding the aesthetics, Radcon #7 is a clear colourless treatment leaving the concrete colour unchanged so that the architect could maintain the dramatic effect of exposed concrete and still being able to achieve a waterproof result. This photo (Figure 8) was taken after the product had been applied.

Radcon Japan our exclusive representatives for Japan, applied Radcon #7 to a total of 2,000 square metres made up of rooftop, balconies and the concrete facades. Figure 9 shows the top of the cylindrical tower in the Temple where glass blocks are to be set into the cast concrete to enable a natural light source.



FIGURE 9 - GLASS BLOCKS TO BE USED FOR LIGHTING

The Temple is located next to the American Embassy and the project was completed in June 1996.

FOUNTAIN PLAZA DE CASTILLA, MADRID

Radcon Formula #7 was recently utilised to waterproof the prestigious "Fountain Plaza De Castilla" in Madrid. The application was completed by Troway, our exclusive representatives for Spain as they enter their second year of distribution.

The fountain was built by F.C.C. under the direction of architect, Sr. Vallecillo for the City Council of Madrid.

Photo 12 shows, 2,000 square metres of Radcon #7 is being applied to the inside of the fountain. This



PHOTO 11 - FOUNTAIN PLAZA DE CASTILLA, SPAIN



PHOTO 12 - RADCON #7 APPLICATION

withstand hydrostatic pressure.

In technical detail, when a Radcon #7 application is placed under hydrostatic pressure, the positive water pressure causes an ongoing reaction with water and free lime creating more insoluble solids (calcium silicate hydrate complex) in the pores, capillaries and cracks to create a waterproof seal. Put simply, the greater the hydrostatic pressure applied to the treatment, the deeper the product permeates into the matrix until all leakage is eliminated.

The completed fountain, seen in Photo 11, shoots water to a height of 32 metres, and its' 12 jets enable the fountain to be changed into many different shapes.

PROBLEM SOLVING IN LATIN AMERICA

Imagine the frustration of protecting your car duco from high alkali water droplets as a result of persistent leaks through a concrete podium slab. From above you have a tiled deck which offers no clue to where the water source is coming. Below the tiles is a failed waterproof membrane.

At first, the leakage may only be in an isolated area, so gutters seem a cheap practical solution. As time passed the membrane delaminates further as a result of the elements, allowing the water to reach cracks further away. Before long the only sure way to protect your car is to place a rain cover over it.

Photo 13 shows Mr Geoff Parker of Parker Limited



PHOTO 13 - TILES BEING REMOVED TO REPLACE FAILING MEMBRANE



PHOTO 14 - GUTTERS USED AS SHORT TERM SOLUTION

on site with Mr Luis Hollanda and colleagues of Lienge Construtora inspecting this very problem.

L i e n g e

Construtora now

our exclusive representatives for Brazil were very interested to learn that an application of Radcon Formula #7 to the mortar joints could have solved all their clients problems, thus alleviating the necessity of tile removal.

In this applications there are a few considerations. Given the tiled deck is stable and mortar joints are in tact, then an application of Radcon #7 to the joints will prevent water penetrating to the membrane below.

This concept also applies to balconies and internal wet areas such as shower recesses. Another advantage of treating the mortar joints between tiles is that Radcon #7 will prevent efflorescence staining on the tiles as water evaporates out of the mortar bed.

RADCRETE



RADCRETE PACIFIC PTY LTD • NEWSLETTER NO. 16 • NOV - DEC 1993

A.C.N. 003 228 975

EDITORIAL

Having now waterproofed building rooftops, wharf decks, silos, water tanks and various other concrete structures for several years, Radcrete Pacific are now pursuing highway and bridge treatments where either freeze/thaw damage is problematic or where membranes would normally be applied to protect bridge decks.

This push into the highway market has seen applications to bridge decks in Italy, Norway, Finland, Hong Kong and Australia.

With further applications under way, highway department approvals are currently being sought in Canada, USA and Sweden.

The benefits of Radcon #7 over membranes used on bridge decks, and chemical sealers which are applied to pylons and sidings are obvious.

Radcrete Pacific Pty Ltd
59 Elizabeth Bay Road
Elizabeth Bay NSW Australia 2011

TELEPHONE 61-2-357 7855

FACSIMILE 61-2-358 5106



RADCON #7 - HERITAGE APPLICATION

This Melbourne heritage building, built in 1888 recently received an all over coat of Radcon Formula #7. Once a Rehabilitation Hospital for returned soldiers from the Boer War it was Richard Falkinger's (a Heritage Architect) decision to preserve the original facade.

After several coats of paint were removed using hot water blasting and a chemical stripper, Reliable Coating Industries applied Radcon Formula #7 to all the rendered surfaces.

The render exhibited the signs of deterioration with craze cracking leading to water penetration through the render. This was contributing to delamination problems with the facade.

Radcon Formula #7 was applied to prevent the ingress of water through the hairline craze cracks and the matrix of the render whilst also increasing the bonding strength to the substrate in suspect areas.

EXCLUSIVE GLOBAL DISTRIBUTOR FOR **RADCON™ FORMULA #7** WATERPROOFING CONCRETE FOR LIFE

RADCRETE



RADCRETE PACIFIC PTY. LTD. • NEWSLETTER NO. 30 • JULY/AUG 2001

ABN 30 003 228 975

Circ. 13,000

EDITORIAL

Radcon Formula #7 has successfully renewed its CSIRO Technical Appraisal.



This is the 5th renewal of the Appraisal since 1994.

CSIRO has taken over the responsibility of issuing technical appraisals for innovative building products and systems formally issued by the Australian Building Systems Council (ABSAC) of which CSIRO was a member.

Each technical Assessment is prepared on behalf of the CSIRO by its Technical Advisory Committee (TAC) > Members of the TAC include

- Australian Institute of Building Surveyors
- Master Builders Australia Inc
- National Association of Testing Authorities Australia
- Standards Australia
- Housing Industry Australia
- Division of Building Construction and Engineering, CSIRO.

Radcrete Pacific Pty. Ltd.

Level 3, 45a Bay Street, Double Bay
SYDNEY NSW 2028 AUSTRALIA

TELEPHONE: (+61-2) 9362 3511

FACSIMILE: (+61-2) 9362 3244

WEB: www.radcrete.com.au

E-MAIL: sales@radcrete.com.au

WORLD'S BEST IN ACTION AGAIN



WORLD'S BEST WATERPROOFING PROTECTING A VIETNAMESE NATIONAL ICON - "HO CHI MINH MONUMENT", LOCATED AT HOA BINH HYDROELECTRICITY STATION, VIETNAM.

RADCON
FORMULA #7
WATERPROOFING CONCRETE FOR LIFE

RADGUARD
CONCRETE & MASONRY WATER REPELLENT

radmyx
CAPILLARY WATERPROOFING SYSTEM

RADFLOOR
FLOOR HARDENING & DUSTBINDING

BIG "C" SUPER CENTER - FOR RADMYX

Owner: Big 'C' Super Center
Public Company Limited
Project: Big 'C' Bangna
Main Contractor: Siphya Construction
Co. Ltd.
Architect: SAI Consultant Co. Ltd.
Structural Engineer: PPS Design Co. Ltd.
Consultant: MAA Consultant Co. Ltd.
Area: Radmyx to Basement
Applicator: Radcon (Thailand)
Co. Ltd.



BIG "C" SUPER CENTRE

Photographed the basement walls of the Big 'C' Bangna project where Radmyx crystal growth is applied as the preferred waterproofing system.

Both MAA Consultant and SAI Consultant saw the merits of fast track construction, cost efficiencies and no requirement for protection prior to backfilling.

The Radmyx system is user friendly and can be applied in the wet season with no fear of debonding or bubbling which could create problems with conventional systems.

The rooftop will require 15,000 sq. metres of Radcon #7 waterproofing to complete our Radpac total system solution delivering a cost effective lifetime waterproof result.

RADCON #7 - VIETNAM NATIONAL TREASURE

We thought our readership may be interested to see how this rather unusual job to a large concrete sculpture was undertaken.

The intricacy of the bamboo scaffolding required is well depicted.

Once minor spalling repairs were done Radcon #7 was applied using a 20 litre back pack type spray unit.

We were very pleased to see Radcon Vietnam procure this site reference which represents a monument of national significance.

Some readers may recall in our Newsletter 22, October 1996 our application story on "Ho Chi Minh's" actual tomb located in Hanoi.

It brings us great pleasure to deliver lifetime concrete protection and waterproofing for Vietnamese infrastructure whilst also protecting National treasures.



HO CHI MINH MONUMENT.

RECENT SITES OF INTEREST 2005

Radcrete Pacific presents: Commercial Buildings



[Click here
for our website](#)



FIGURE 1.

Wat Dhammakaya project -
the largest Buddhist Temple
in Thailand

Here you may view the largest Buddhist Temple ever constructed in Thailand.

Some 20,000 sq metres of Radcon waterproofing was completed in September 2003.

A further 20,000 sq mtrs of Radcon waterproofing was applied during 2004.

Upon completion this site will have received some 340,000 square metres of Radcon lifetime waterproofing and structural protection.

As at February 2005 this is one of some 35 major Radcon # 7 and or Radmyx sites currently progressing under Radcon Thailand watchful eyes.

SITE DETAILS:

COUNTRY	- Thailand
PROJECT NAME	- Wat Dhammakaya
DEVELOPER	-
ARCHITECT	-
SUPERVISOR	-
CONTRACTOR	- Thai Obayashi Corp., Ltd
APPLICATOR	- Radcon Thailand
SIZE	- 340, 000 sq mtr

RADCRETE



RADCRETE PACIFIC PTY LTD • NEWSLETTER NO 14 • FEB - MAR 1993

EDITORIAL

There is only one product which can claim to waterproof concrete for the life of a structure in high thermal stress applications.

That product is Radcon Formula #7, a biochemically manufactured silicate based material which creates a unique hydrophobic waterproofing seal.

The performance characteristics of Radcon #7, are such that roofing and trafficable membranes are now totally obsolete.

In specifying Radcon #7 you will not only be saving on your waterproofing costs, you will also be substantially reducing site time required for application when compared to traditional membrane treatments.

Radcrete Pacific Pty Ltd
59 Elizabeth Bay Road
Elizabeth Bay NSW Australia 2011

TELEPHONE 61-2-357 7855

FACSIMILE 61-2-358 5106



NEWINGTON COLLEGE - SANDSTONE APPLICATION

The success of the Radcon #7 treatment to selected areas of sandstone at Newington College in 1988 led to a second stage of treatment in April 1992.

The entire School Chapel, some 700 square metres was Radcon #7 treated to prevent any further degradation of the stone and to act as a bond where the sandstone was delaminating due to weathering.

The photograph appearing above depicts a Radcon #7 treatment to halt the sandstone's degradation which otherwise would have led to costly stone replacement work in the future.

This application was supervised by Mr. G Kasbarian of Conceal Concrete Waterproofing Pty. Ltd.

EXCLUSIVE GLOBAL DISTRIBUTOR FOR **RADCON™ FORMULA #7** WATERPROOFING CONCRETE FOR LIFE

RADCON #7 FOR VANCO BUILDING

This interesting building located in Moo-zar, Taipei received a Radcon Formula #7 treatment of 3,000 square metres. The application was undertaken by Kingal Trading Corp., the distributor for Taiwan and the builders were Chiu-Nien Construction Co.

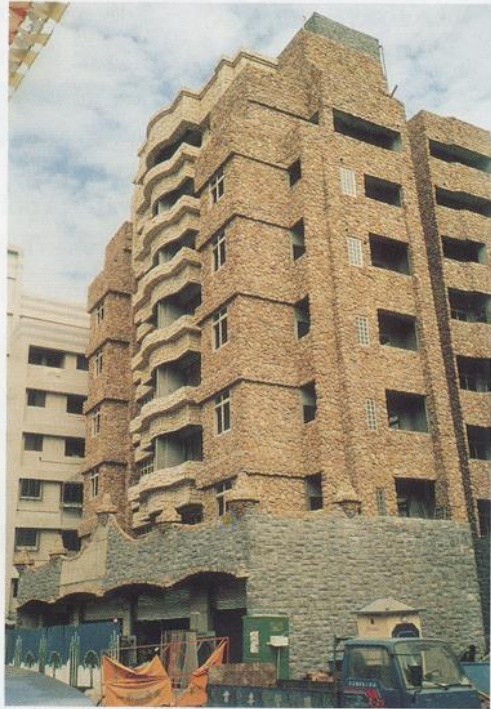
The areas waterproofed includes the decorative facade, rooftop and podium decking.

From the picture below, it can be seen that to achieve the overall effect, sandstone pieces were individually rendered into the building's facade.

Radcon Formula #7 was specified to the facade, firstly, to prevent wind driven rain penetrating through the decorative facade, and secondly to provide protection against the potential efflorescence leaching from the mortar mix.

In this application, Radcon Formula #7 will prevent the penetration of water and airborne pollutants into the concrete's matrix and increase the bond strength of the render. As the Radcon #7 uses available calcium in its' reaction to form a viscous glass-like gel, it prevents unsightly calcium deposits forming as water would normally leach out excess calcium.

Although the labour cost is relatively low in Taiwan, the other product benefits of Radcon #7 being, ease of application, no colour change and inability for the product to be damaged from the surface make it the ideal application.



RADCON #7 FOR QUEENSLAND UNITS

Forrester Constructions utilised Radcon Formula #7 for the waterproofing of the roof and balconies on this home unit project, "Sail Fish Cove" in Mooloolaba.

Radcon #7 has been applied not only for waterproofing, but also protection against airborne salts on this seashore site.

The approved applicators for this site were Laceworth Pty. Ltd., one of our most experienced applicators in Queensland.



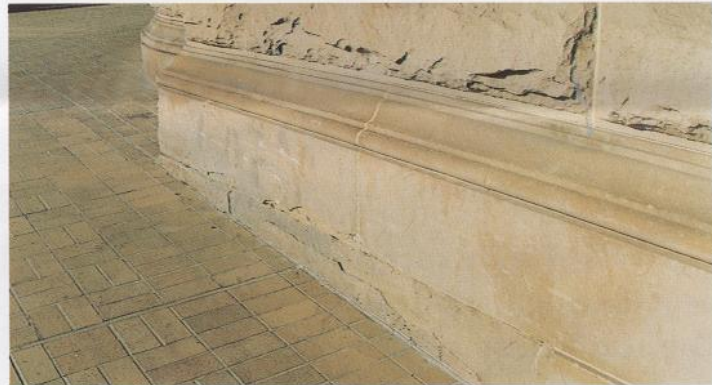
CENTRAL RAILWAY - A TEST FOR RADCON #7

One of Sydney's most famous landmarks recently received Radcon #7 to test areas where the sandstone was delaminating and sanding due to weathering.

Radcon #7 reacting with water and the calcium present in the stone re-instates bonding as our product forms its glass hard gel up to 35mm into the stone.

The result is a stone more durable than the original material which maintains outgassing capabilities.

Test sections were applied by approved applicator Kratrim Pty Ltd.



RADCON #7 - FOR AUSTRALIA'S LEADING COMPANIES

Since Radcrete Pacific first became involved with the Radcon #7 technology in 1987 our approved applicators have undertaken successful waterproofing applications for the following building companies, property companies and Government Departments in Australia:

Adco Constructions	Concrete Constructions	Leighton Contractors	Schraeder Constructions
Amacon	Condux	Meriton Properties	Snowy Mountains Authority
AMP Properties	Consulere Design & Construct	Mirvac Projects	State Superannuation Board
A. V. Jennings	CRI	Multiplex	Stuart Bros.
A. W. Edwards	Dainford Properties	Newcastle City Council	Tebor Constructions
Aust. Construction Services	Dept. of Harbours & Marine	Parks Projects	Thiess Contractors
Australian Housing & Land	Dept. of Navy	Paynter & Dixon	Toga Developments
Barclay Bros.	Design & Development	Philip Lipman	Trivan Building Services
Barclay Mowlem	Gaines Construction	Port Hedland Port Authority	Triden Contractors
Boulderstone Hornibrook	Girvan	Pro Build	Valere Constructions
Belmadar Constructions	Haslin Constructions	Public Works Department	Water Board (NSW)
BHP Australia	Hughes Bros.	Queensland Main Roads Dept.	Water Authority (Qld)
Brambles Industries Ltd.	Jencon Project Builders	R. & A. Constructions	Water Authority (WA)
Capitol Apartments	John Holland	Reed Construction	Watkins White
Cedra Constructions	J. P. Cordukes	Refurburations	Watpac Pty. Ltd.
Centennial Constructions	Kayleigh Constructions	R. I. C. Constructions	Webb Bros.
Civic & Civic	Kings Car Park	Rosecorp	Westfield Holdings
C.H. Webb	K. B. Hutcherson	Sabemo	Winterton Constructions
C. M. Group	Leda Holdings	Safin Pty. Ltd.	Zadro Constructions

Whilst our list may not be complete, it nevertheless proves our point.

Bye Bye membranes - Hello Radcon #7!

PHILIPPINES SPECIAL

[Click here
for our website](#)

Radcrete Pacific presents: Commercial Buildings



SITE DETAILS:

PROJECT	INFANT JESUS CHURCH-2007
AREA	465 sqm Bell Tower Dome
ARCHITECT	In-Church Architect
CONTRACTOR	MB Technosolutions Corporation
APPLICATOR	MB Technosolutions Corporation

EXCLUSIVE GLOBAL DISTRIBUTOR FOR

RADCON
FORMULA#7

WATERPROOFING CONCRETE FOR LIFE

RADCRETE



RADCRETE PACIFIC PTY LTD • NEWSLETTER NO. 19 • MAR - APR 1995

A.C.N. 003 228 975

EDITORIAL

Field and laboratory product testing is an important element in winning the confidence of specifiers. If the specifier has a performance benchmark, then the choice for the most appropriate product becomes obvious. Unfortunately, comparing apples with apples is rarely possible. Let's face it - isolating just one problem in a structures performance is not facing reality.

The ultimate goal of waterproofing and concrete protection is to reduce the long-term maintenance cost of the whole structure.

The philosophy behind our testing program for Radcon #7 recognises that a structure is not just one big matrix. It has cracks, it is exposed to thermal stress, aggressive environments, wind driven rain or hydrostatic pressure and it will get damaged during construction. Importantly, concrete structures are not built and cured in a laboratory environment.

Our goal is to address the reality of structures as they stand and improve their servicable life when they are built.



MENARA KUALA LUMPUR

Constructed by Wayss & Freytag, a subsidiary of the leading German building and civil contractors, the Menara Kuala Lumpur telecommunications tower is currently the tallest concrete tower in SE Asia and the third tallest telecommunications tower in the world.

The tower, standing 421 metres high, is located in the Bukit Nanas area of Kuala Lumpur. The total weight of the Tower is some 100,000 tonnes utilising 45,000 cubic metres of concrete, 5,300 tonnes of reinforcements and 1,300 tonnes of structural steel.

The tower structure is divided into three basic sections - the Foundation Base will accommodate a theatre, amphitheatre, shops, fast food restaurant, souvenir shop etc. The Tower Shaft has 4 lifts and a staircase. The Tower Head will be used for telecommunication purposes and also have an observation platform and revolving restaurant.

Green East Enterprise, our Malaysian distributors, applied Radcon #7 to 750 square metres of Levels 9 & 10 of the Tower Head. These sections of concrete are exposed to high levels of UV light. Radcon #7 was ideal in this application as the material, unlike normal coatings, will not deteriorate due to high UV exposure and frequent rain periods.

Radcrete Pacific Pty Ltd

Level 3, 45a Bay Street
Double Bay NSW Australia 2028

TELEPHONE +61-2-362 3511

FACSIMILE +61-2-362 3244

EXCLUSIVE GLOBAL DISTRIBUTOR FOR **RADCON[®]** WATERPROOFING CONCRETE FOR LIFE
FORMULA #7